



1 1/4" BORE ACCESSORIES



MOUNTING NUTS

Stud Nut

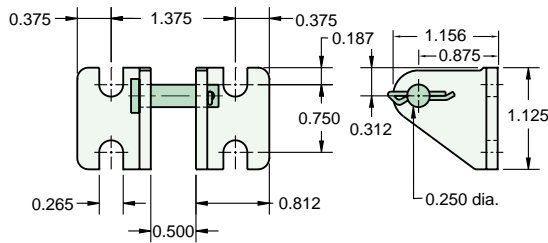
Part Number	Across Flats	Nut Thickness	Nut (Thread)
N12-16	1 3/32"	27/64"	3/4-16

Rod Nut

Part Number	Across Flats	Nut Thickness	Nut (Thread)
N06-24A	9/16"	7/32"	3/8-24
N06-24B	1/2"	1/8"	3/8-24

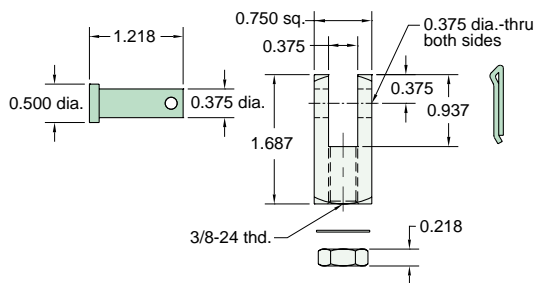
CB-2095

Clevis Bracket
Material: steel, bright zinc plated



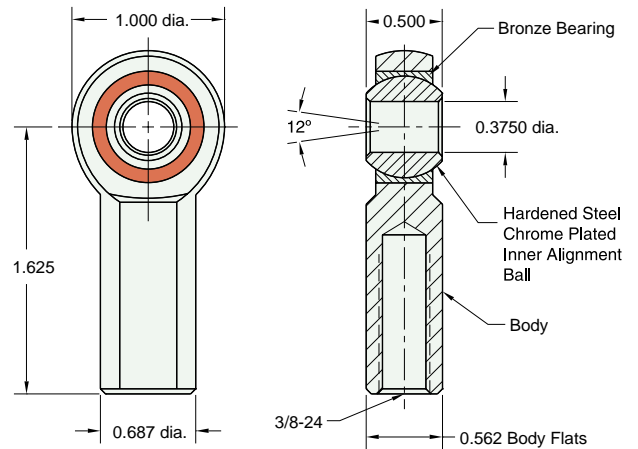
RC-2081

Rod Clevis
Material: steel, bright zinc plated



RE-2085

Rod End
Material: steel, bright zinc plated body



Lockwasher

Locknut

Max. Static Radial Load: 3950 lbs.
Fits Rod Thread Size: 3/8-24

FB-2491

Foot Bracket
Material: steel, bright zinc plated

